



Q2 2020

---

# CORO ENERGY PLC INVESTOR PRESENTATION Q2



---

# DISCLAIMER

The information contained in this document (“Presentation”) has been prepared by Coro Energy plc (the “Company”). While the information contained herein has been prepared in good faith, neither the Company nor any of its shareholders, directors, officers, agents, employees or advisers give, have given or have authority to give, any representations or warranties (express or implied) as to, or in relation to, the accuracy, reliability or completeness of the information in this Presentation, or any revision thereof, or of any other written or oral information made or to be made available to any interested party or its advisers (all such information being referred to as “Information”) and liability therefore is expressly disclaimed. Accordingly, neither the Company nor any of its shareholders, directors, officers, agents, employees or advisers take any responsibility for, or will accept any liability whether direct or indirect, express or implied, contractual, tortious, statutory or otherwise, in respect of, the accuracy or completeness of the Information or for any of the opinions contained herein or for any errors, omissions or misstatements or for any loss, howsoever arising, from the use of this Presentation.

This Presentation may contain forward-looking statements that involve substantial risks and uncertainties, and actual results and developments may differ materially from those expressed or implied by these statements. These forward-looking statements are statements regarding the Company’s intentions, beliefs or current expectations concerning, among other things, the Company’s results of operations, financial condition, prospects, growth, strategies and the industry in which the Company operates. By their nature, forward-looking statements involve risks and uncertainties because they relate to events and depend on circumstances that may or may not occur in the future. These forward-looking statements speak only as of the date of this Presentation and the Company does not undertake any obligation to publicly release any revisions to these forward-looking statements to reflect events or circumstances after the date of this Presentation.

Neither the issue of this Presentation nor any part of its contents is to be taken as any form of commitment on the part of the Company to proceed with any transaction and the right is reserved to terminate any discussions or negotiations with any prospective investors. In no circumstances will the Company be responsible for any costs, losses or expenses incurred in connection with any appraisal or investigation of the Company. In furnishing this Presentation, the Company does not undertake or agree to any obligation to provide the recipient with access to any additional information or to update this Presentation or to correct any inaccuracies in, or omissions from, this Presentation which may become apparent.

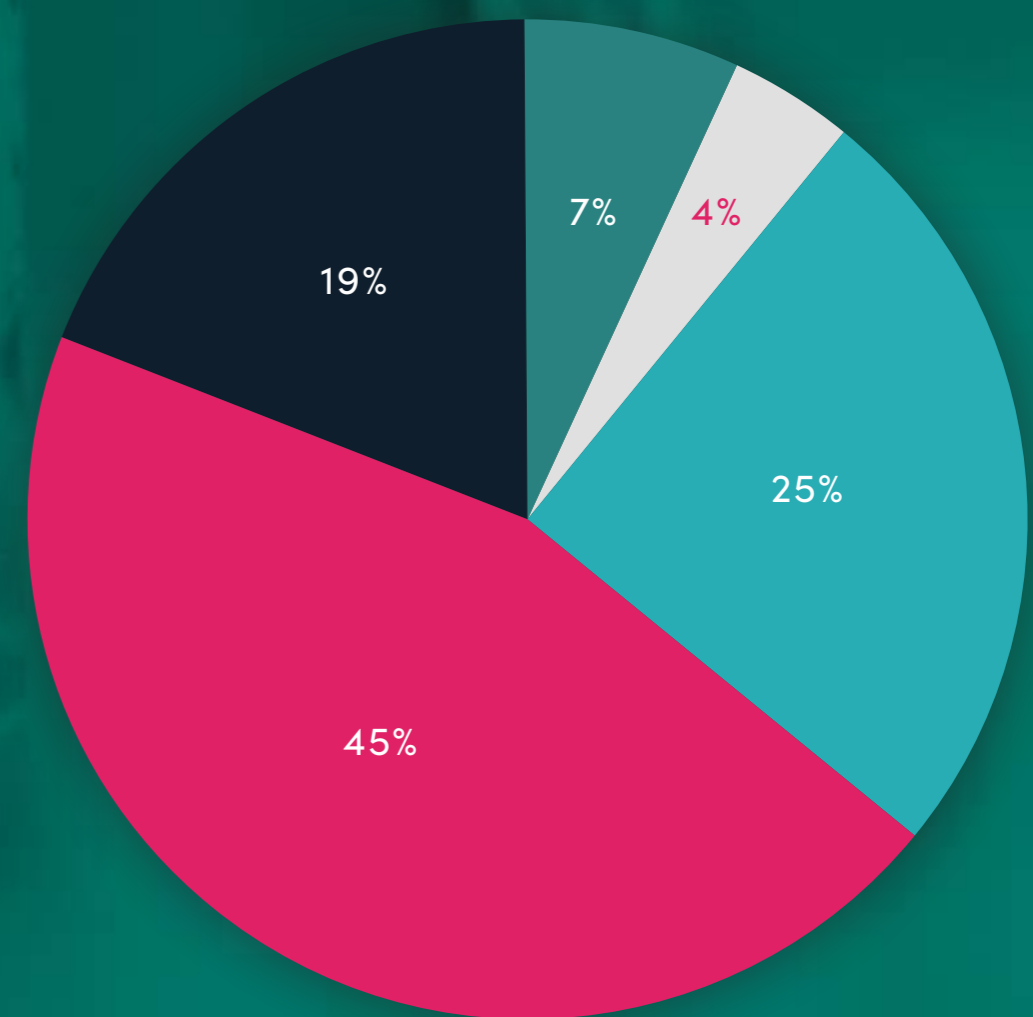
This Presentation should not be considered as the giving of investment advice by the Company or any of its shareholders, directors, officers, agents, employees or advisers. In particular, this Presentation does not constitute an offer or invitation to subscribe for or purchase any securities and neither this Presentation nor anything contained herein shall form the basis of any contract or commitment whatsoever. Each party to whom this Presentation is made available must make its own independent assessment of the Company after making such investigations and taking such advice as may be deemed necessary. In particular, any estimates or projections or opinions contained herein necessarily involve significant elements of subjective judgment, analysis and assumptions and each recipient should satisfy itself in relation to such matters. The distribution of this document in or to persons subject to other jurisdictions may be restricted by law and persons into whose possession this document comes should inform themselves about, and observe, any such restrictions. Any failure to comply with these restrictions may constitute a violation of the laws of the relevant jurisdiction.



# A FULL CYCLE SOUTH EAST ASIAN FOCUSED E&P COMPANY

- Regional gas & oil strategy backed by:
  - Supply/demand imbalance
  - Strong local gas markets
  - Scarcity of credible small cap operators
- Well positioned to navigate challenging markets
  - \$4.5m (unaudited) cash on hand at 31 March 2020
  - PSC in Indonesia with discovered resource and attractive commercial metrics even at low commodity prices
- Recent cost reduction programme to weather low oil price environment

SHAREHOLDERS



RETAIL   LOMBARD ODIER   CONRAD PETROLEUM LTD  
CIP   OTHER

A FULL CYCLE SOUTH EAST ASIAN FOCUSED E&P COMPANY



# BOARD OF DIRECTORS



**James Parsons**

Non-Executive Chairman

- Executive Chairman Ascent Resources Plc, Executive Chairman Regency Mines Plc, Non- executive Chairman of Echo Energy Plc,
- Over 20 years' experience in the fields of strategy, management, finance and corporate development
- Qualified accountant and has a BA Honours in Business Economics



**Andrew Dennan**

Non-Executive Director

- CEO Ascent Resources Plc
- Over 10 years' experience in capital markets
- Leading proprietary investment decisions, capital raising, risk oversight and portfolio management
- BSc (Hons) degree in Actuarial Science from City University, London



**Fiona MacAulay**

Non-Executive Director

- Non- Executive Chairperson at Independent Oil and Gas
- Formerly CEO at Echo Energy Plc and COO at Rockhopper
- Chartered Geologist and has held the position of European President of the American Association of Petroleum Geologists, currently sits on the Geological Society Investment Committee



**Marco Fumagalli**

Non-Executive Director

- Managing Partner at Continental Investment Partners
- Non-Executive director at CIP Merchant Capital Limited
- Qualified accountant with a degree in Business Administration from Bocconi University in Milan

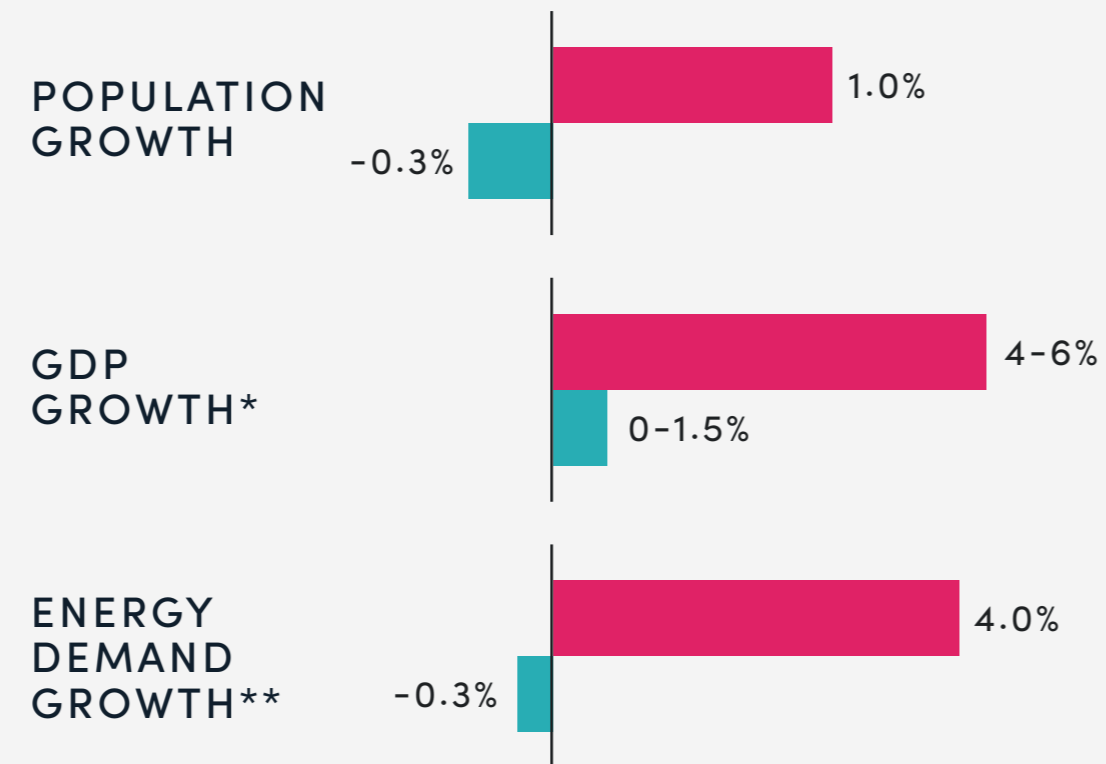


# WHY SOUTH EAST ASIA?

## ► INCREASING DEMAND

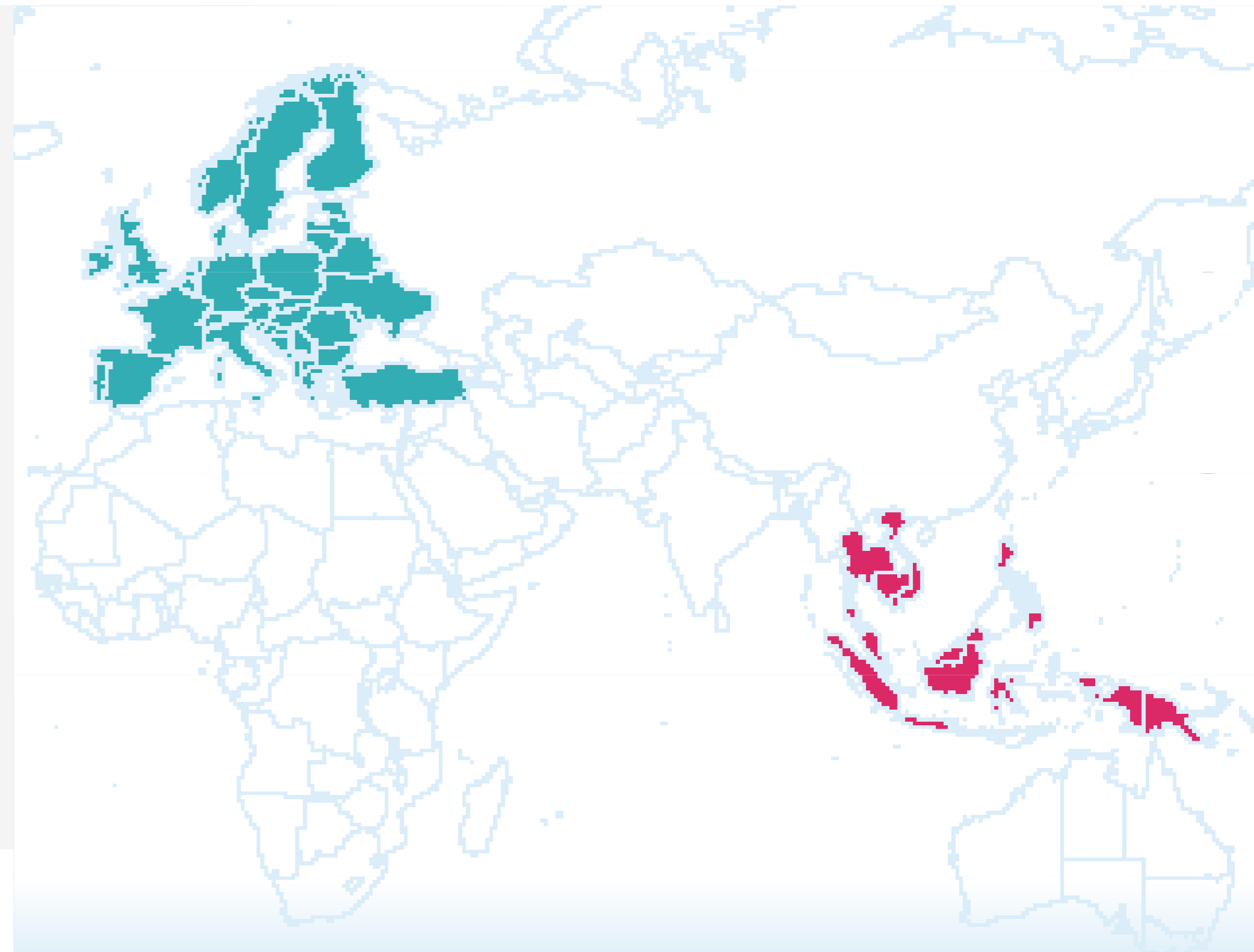
### ▼ SOUTH EAST ASIA AND EUROPE IN COMPARISON

■ SE Asia ■ Europe



\*AVERAGE ANNUAL GROWTH 2020/2021

\*\*AVERAGE ANNUAL GROWTH UNTIL 2040 (PUBLISHED JANUARY 2020 PRE-COVID -19 FIGURE)



WHY SOUTH EAST ASIA?

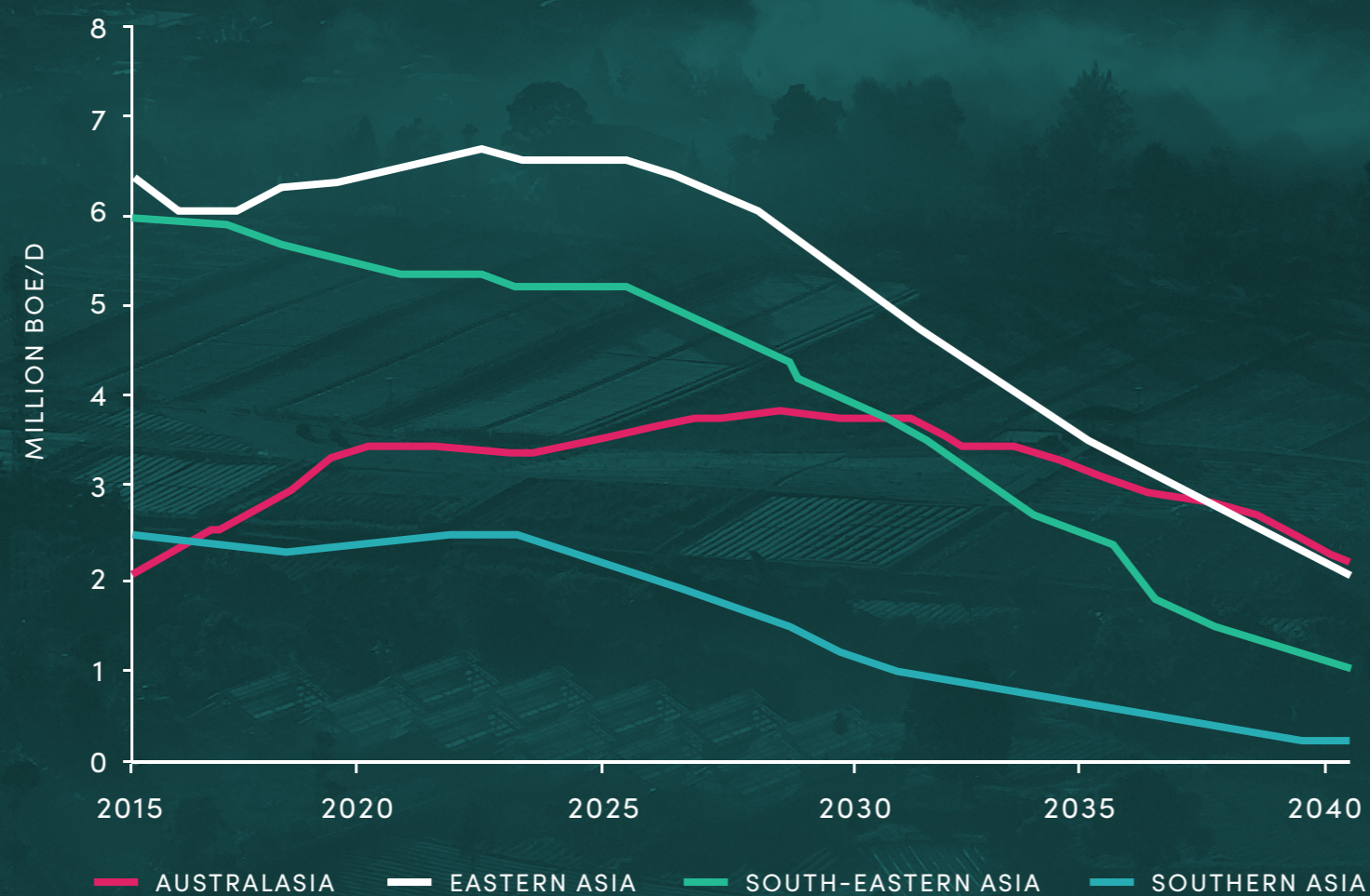


# WHY SOUTH EAST ASIA?

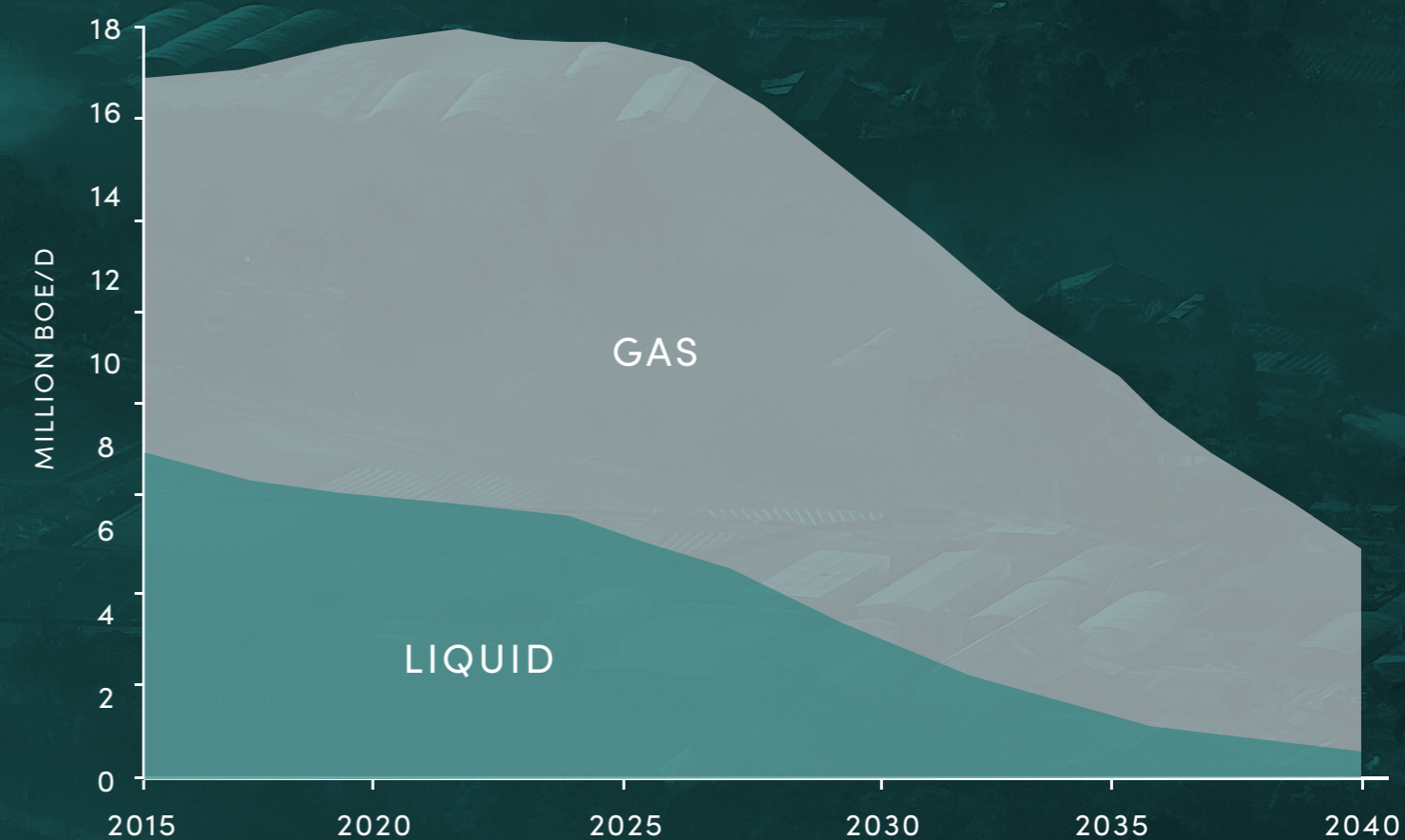
## ▶ WHILE SUPPLY IS FALLING

- Indigenous supply in decline as demand grows; future output increasingly dominated by gas

▼ SUPPLY BY REGION



▼ SUPPLY BY HYDROCARBON



WHY SOUTH EAST ASIA?

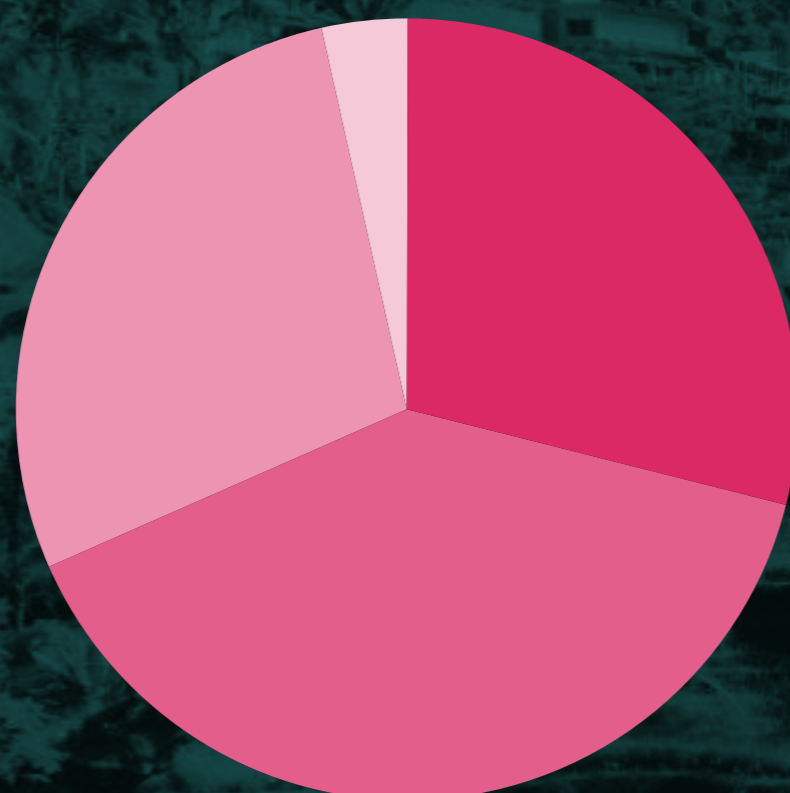
SOURCE: WOOD MACKENZIE, LENS



# WHY SOUTH EAST ASIA?

▶ Asia Pacific holds 70 billion boe of discovered but undeveloped resource

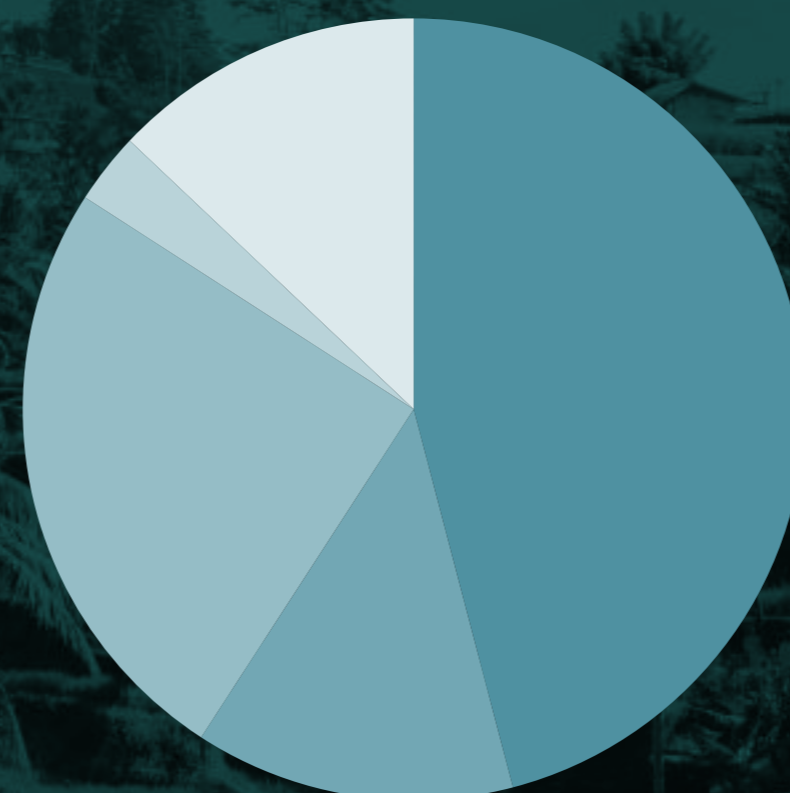
▼ WATER DEPTH



■ ONSHORE      ■ SHELF  
 ■ DEEPWATER   ■ ULTRA-DEEPWATER

▶ ~75% onshore and shallow water

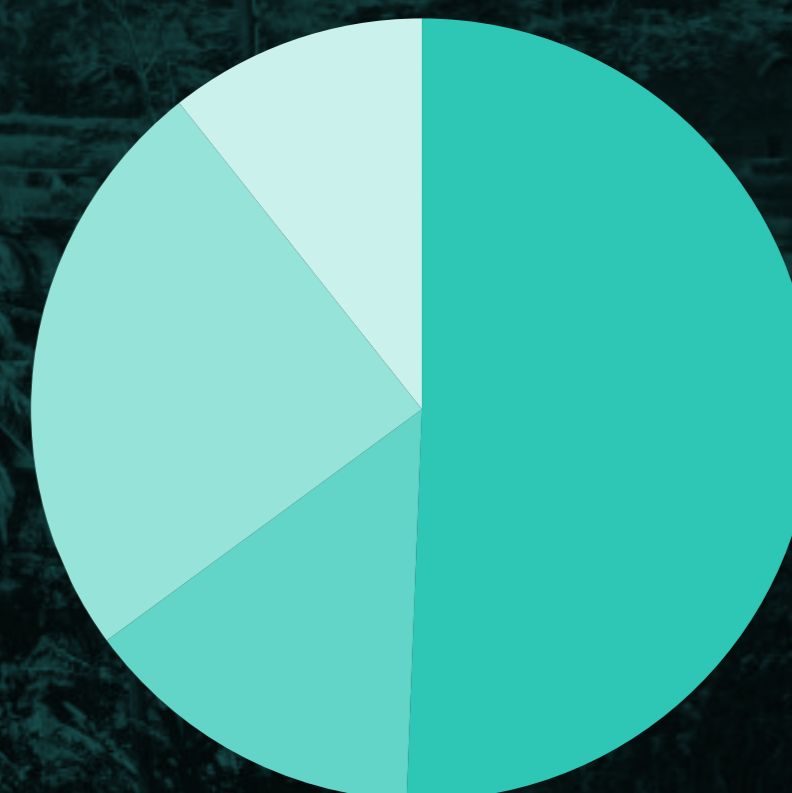
▼ RESOURCE THEME



■ CONVENTIONAL   ■ DEEPWATER  
 ■ LNG                ■ UNCONVENTIONAL  
 ■ ACID/SOUR GAS

▶ Close to half conventional

▼ OPERATOR



■ NOCS                ■ MAJORS  
 ■ LARGE & MID CAPS   ■ OTHERS

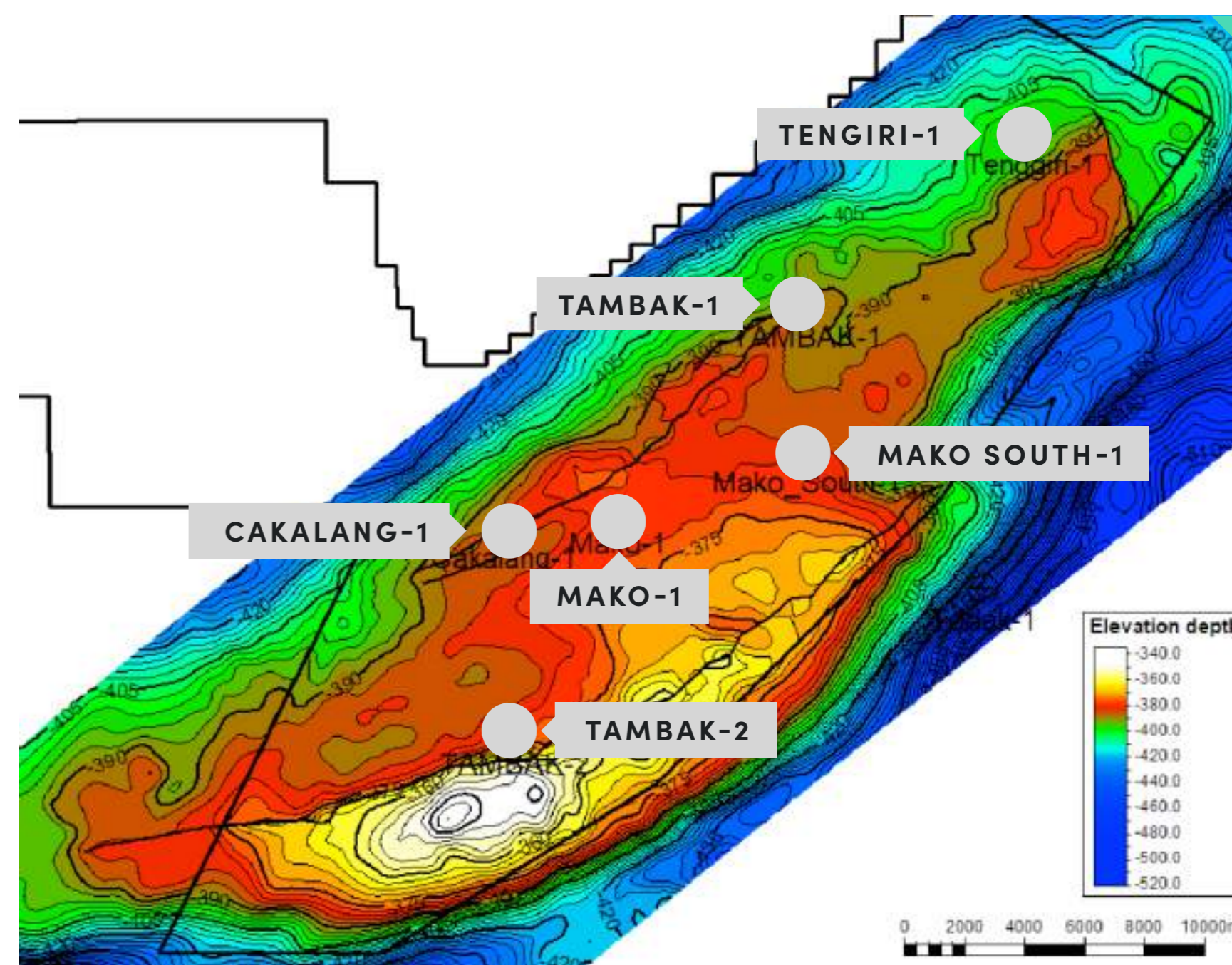
▶ More than 1/2 held by majors... but this is changing

## WHY SOUTH EAST ASIA?



# MAKO GAS FIELD, DUYUNG PSC HIDING IN PLAIN SIGHT

- Biogenic gas accumulation located in the prolific West Natuna basin
- Shallow, Pliocene-age Intra-Muda sandstone reservoir, with gas water contact at c. 391m TVDss
- Six wells have penetrated the field to date
- Reservoir cored & tested by the Mako South-1X well (June 2017)
  - 20%+ porosities, multi-Darcy permeability
  - Flowed 10.8 MMscf/d on test
  - Dry gas, no H<sub>2</sub>S, minimal CO<sub>2</sub>, over 97% methane
  - Two well's DST completed - flowed 11.4 MMscf/d
- Independently certified by GCA (pre-drill)
- Further flow test conducted with the Tambak-1 well (November 2019)
  - Intersected a 24 metre intra-Muda sandstone section
  - Well defined gas water contact at 393m TVDSS, consistent with other wells drilled on the structure
  - Flowed 11.4 MMscf/d on test



## THE MAKO ANTICLINE

Huge structure 47 km long, 16 km wide  
c. 350 sq km of areal closure above the GWC

DUYUNG PSC:  
THE MAKO  
GAS FIELD





# APPRAISAL CAMPAIGN SUCCESS

- > Mako Field = Large, Single Gas Tank
- > Extensive High Quality Reservoir
- > Distributed Over Huge Areal Extent
- > Excellent Porosity, Multidarcy Permeability
- > Sweet, Dry Natural Gas, >97% Methane
- > Multiple Successful DSTs
- > 276Bcf (2C), 392Bcf (3C) prior to appraisal

	1C	2C	3C
PRE DRILL (BCF)	184	276	392
POST DRILL (BCF)	323	493	666

PRE-DRILL IS BASED ON GCA AUDIT 2018, UPDATED FIGURES BASED ON OPERATOR ESTIMATES APRIL 2020, SUBJECT TO UPDATED GCA AUDIT IN Q2 2020

CERTIFICATION BY GAFFNEY, CLINE & ASSOCIATES (NOV. 2018)

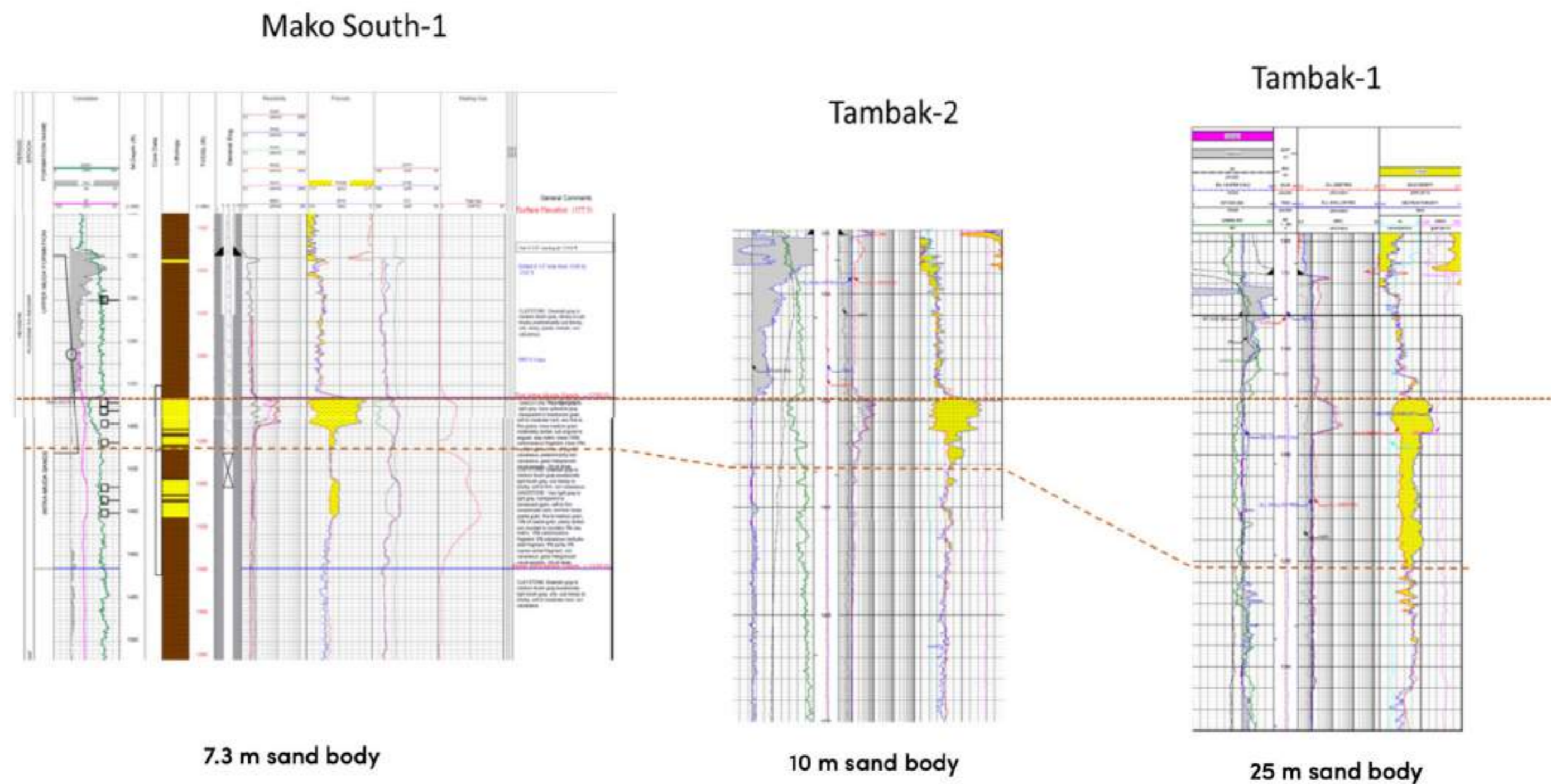


APPRAISAL  
CAMPAIGN  
SUCCESS



# MAKO APPRAISAL WELLS: ADDING c.217 BCF CONTINGENT RESOURCES

## WELL LOGS FLATTENED ON INTRA-MUDA SANDSTONE RESERVOIR



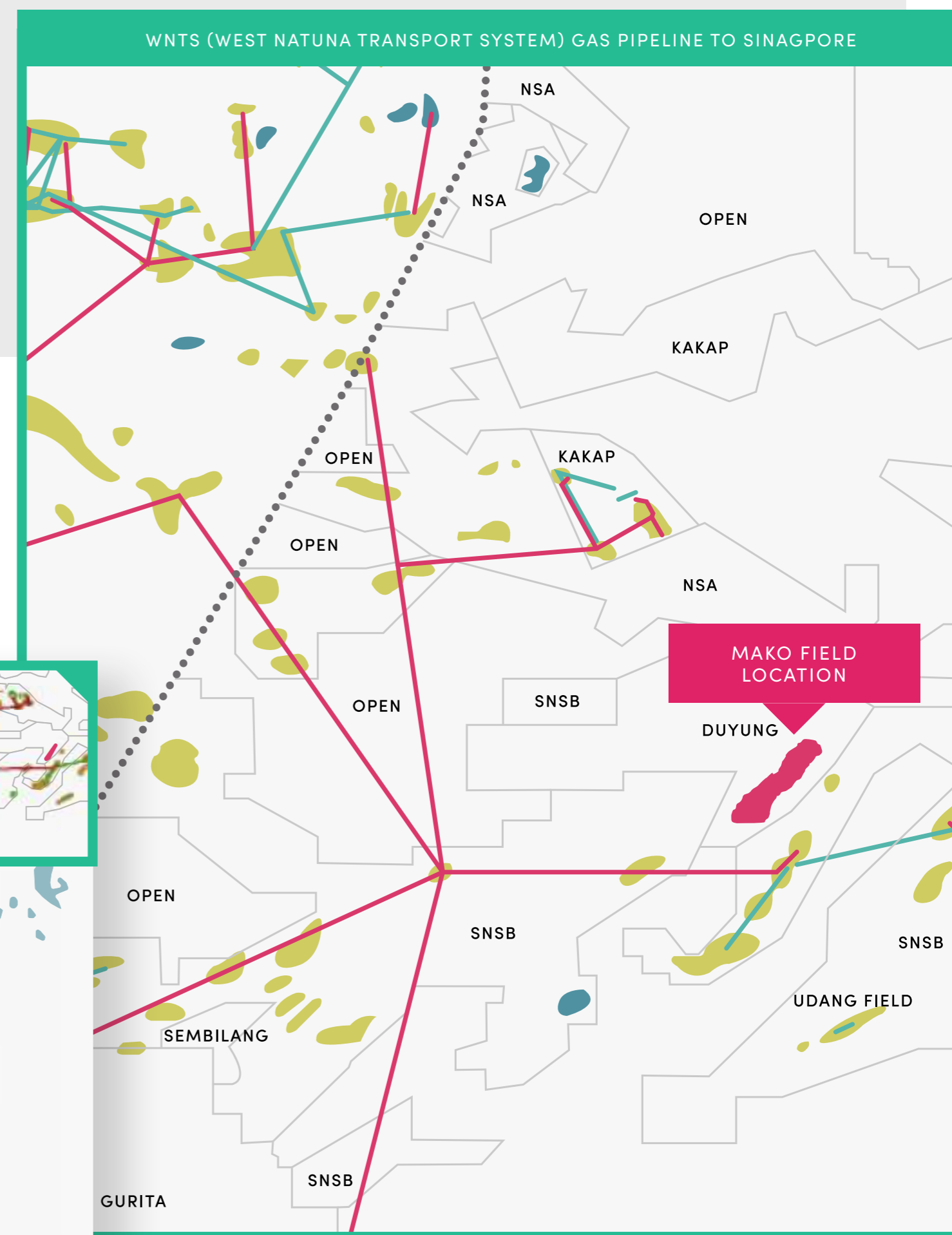
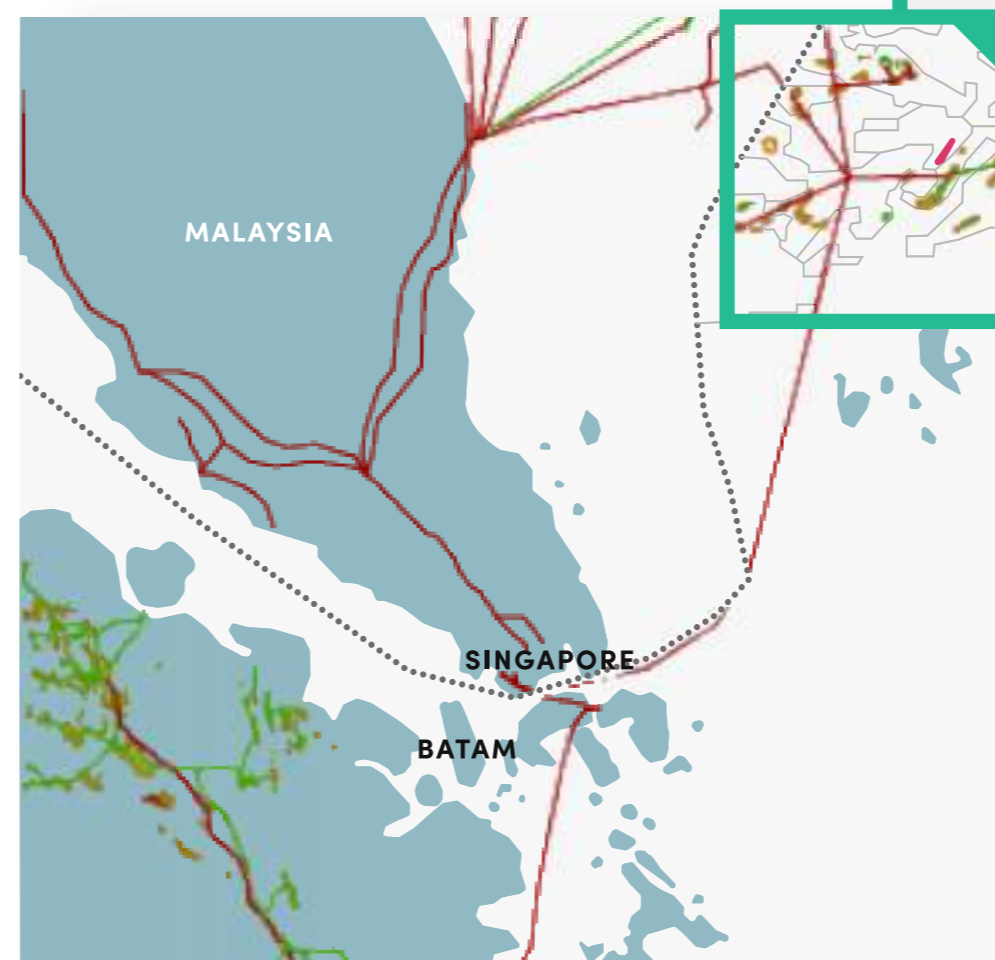


# ACCESS TO SINGAPORE GAS MARKET

- > 16 km from Kerisi platform (Medco-operated)
- > Can hook into West Natuna Transportation System (WNTS), delivers gas to Singapore
- > WNTS operated by ConocoPhillips on behalf of the basin operator group: Medco, Premier, STAR
- > Open Access (in theory)
- > HoA signed with Singaporean Buyer
- > Gas Sales Agreement negotiations are ongoing

ACCESS TO SINGAPORE

MAKO FIELD LOCATION IN COMPARISON TO SINGAPORE AND WNTS GAS PIPELINE SYSTEM





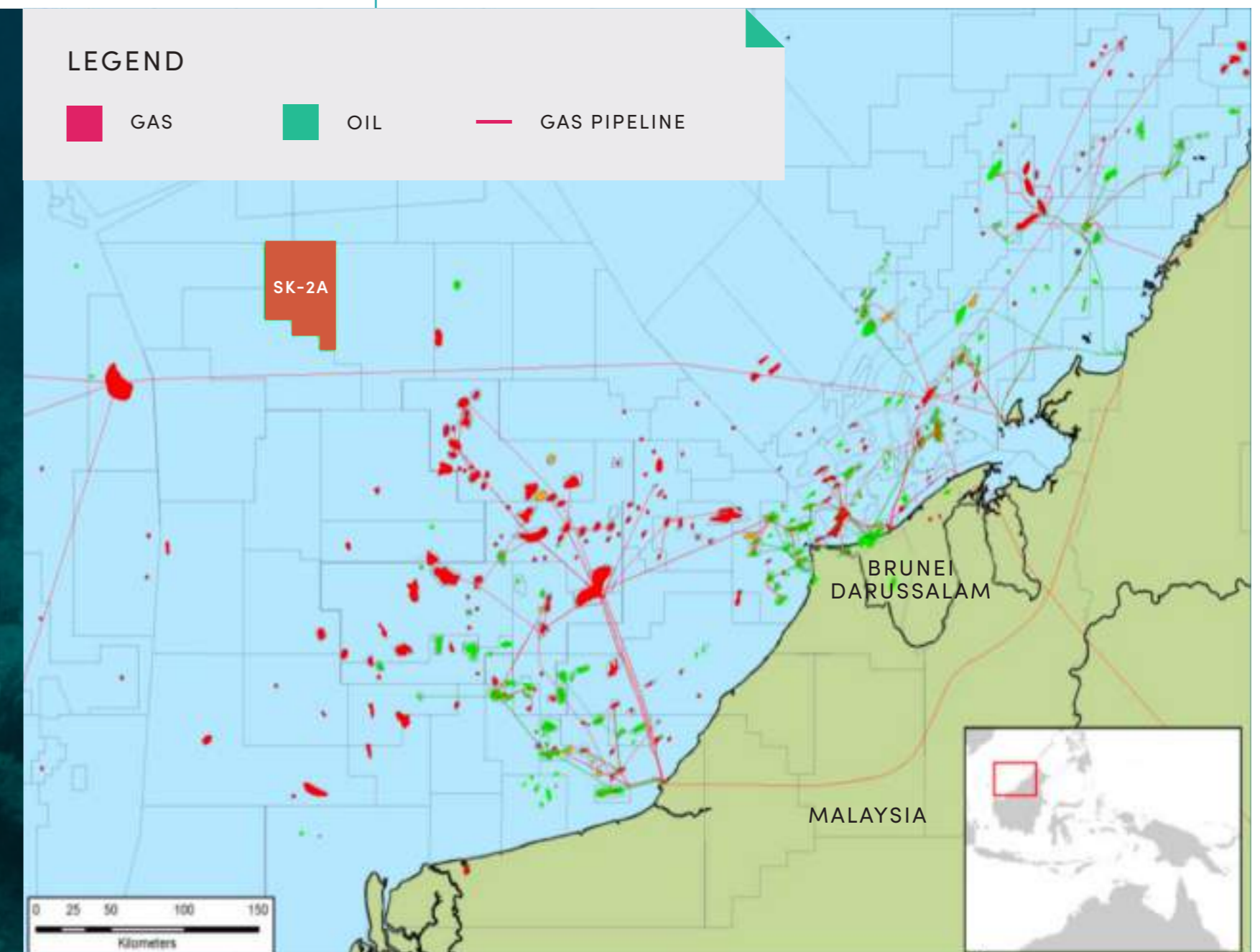
# MALAYSIA BLOCK 2A – MULTI TCF POTENTIAL

Joint Study agreement with  
National Oil company (Petronas)

Situated in Eastern Malaysia –  
block covers an area of  
2,400km<sup>2</sup>

High quality 3D seismic data and  
regional well data to be used by  
Coro to assess petroleum potential

- Central Luconia is one of 8 geological regions in the Sarawak basin
- Four of these sub-basins, including Central Luconia, are highly prolific
- Stable micro-plate surrounded by deep basins
- 100 – 250 km offshore, water depths > 250 m
- Main play is Miocene-age reefal carbonates
- Shell's early gas discoveries led to the Bintulu LNG plant being established onshore in the 1980's
- Sapura E&P has had recent success, finding over 4.5 Tcf in a series of deep water discoveries
- Good address
- Prolific basin
- Gas into LNG Plant
- Good neighbours



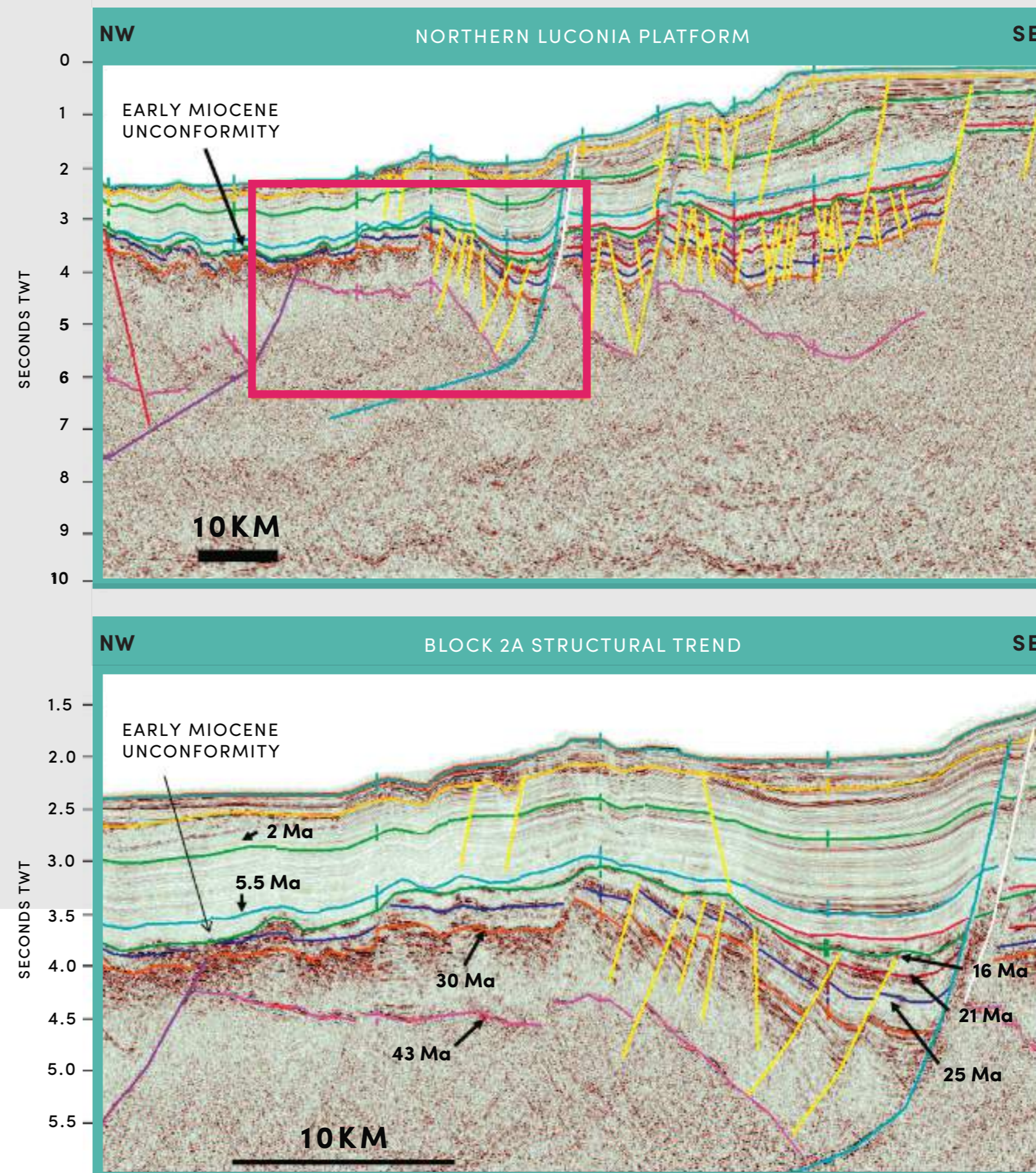
MALAYSIA  
BLOCK 2A –  
MULTI TCF  
POTENTIAL



## GIANT STRUCTURES WITH MULTI TCF RESOURCE POTENTIAL WITHIN THE STUDY AREA

- Over 2,900 sq km of modern, high quality 3D seismic data available (2016 vintage)
- Significant leads identified in proven petroleum systems in our recent work
- Large structural closures of over 200 sq km mapped within Block 2A. Highly prospective trend identifying for eventual drilling

From 'The Structure & Stratigraphy of Deepwater Sarawak, Malaysia.'  
Mazlan Madon et al, 2013



## STUDY AREA



**coro  
energy**  
EXPLORATION & PRODUCTION **PLC**